



marinakis
PROPERTY DEVELOPERS

Floorplans

PALMA FIORE

PALMA FIORE

1-BEDROOM APARTMENT

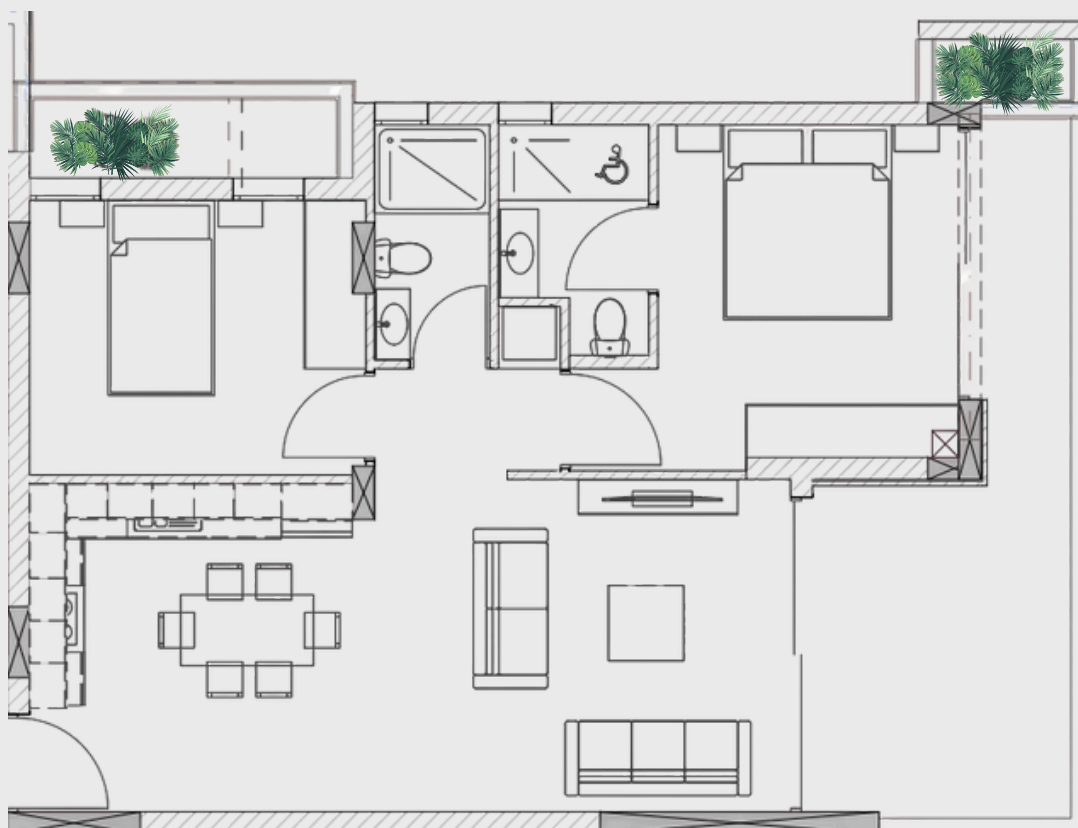
Total covered area (sq.m)	77
Living area (sq.m)	51
Covered verandas (sq.m)	12
Utility areas (sq.m)	14
Bedroom(s)	1
Bathroom(s)	1
Covered parking spaces	1



PALMA FIORE

2-BEDROOM APARTMENT

Total covered area (sq.m)	110
Living area (sq.m)	76
Covered verandas (sq.m)	20
Uncovered verandas (sq.m)	7
Utility areas (sq.m)	14
Bedroom(s)	2
Bathroom(s)	2
Covered parking spaces	1



PALMA FIORE

3-BEDROOM APARTMENT

Total covered area (sq.m)	149
Living area (sq.m)	116
Covered verandas (sq.m)	20
Uncovered verandas (sq.m)	26
Utility areas (sq.m)	14
Bedroom(s)	3
Bathroom(s)	3
Covered parking spaces	1
Roof garden (sq.m)	143

